



5/9 Mandolong Road Mosman, NSW



1



1

**""HOLDING DEPOSIT TAKEN""  
GROUND FLOOR APARTMENT EASY WALK  
TO  
MOSMAN VILLAGE &**

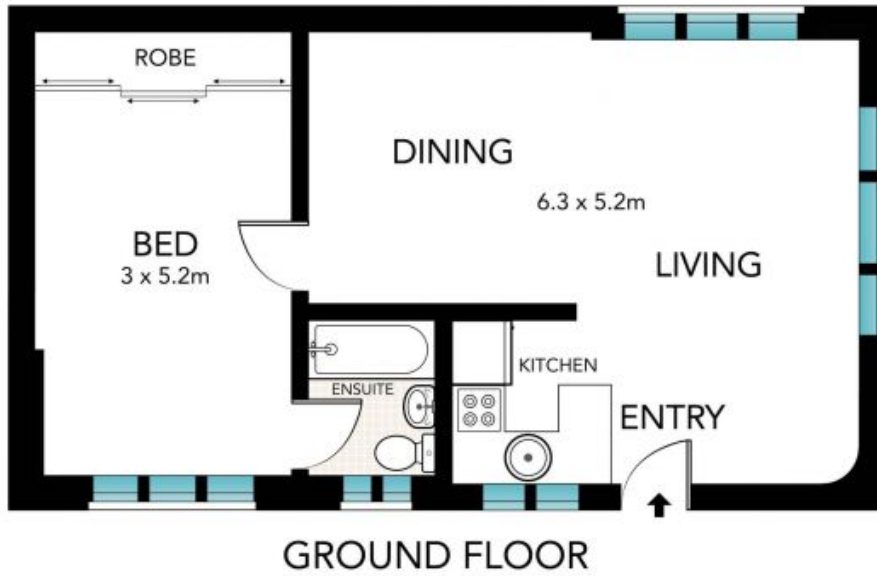
Nestled at the rear of this well maintained complex, this spacious and bright garden apartment has private level entry and dual street access. Situated high on Balmoral slopes and just an easy stroll to Balmoral Beach and Mosman village's boutique shops, cafes, and transport this property is available.

- \* Large living and dining area flooded with light from large windows with plantation shutters
- \* House-like feel with private entry and direct access to common gardens
- \* wooden floorboards in living area, generous ceiling heights
- \* Level dual street access



**Mary Hill**

+6141 165 3428



SCALE (METRES)



All the information provided on this page is intended to be a guide only and is not intended to be a guarantee for anything. Please contact your agent for more information. All dimensions are approximate and relative only.

5/9 Mandolong Road, Mosman