



2/3-9 Lamont Street Wollstonecraft, NSW



3



2



1

Fabulous Courtyard Apartment...Ultra Convenient Location

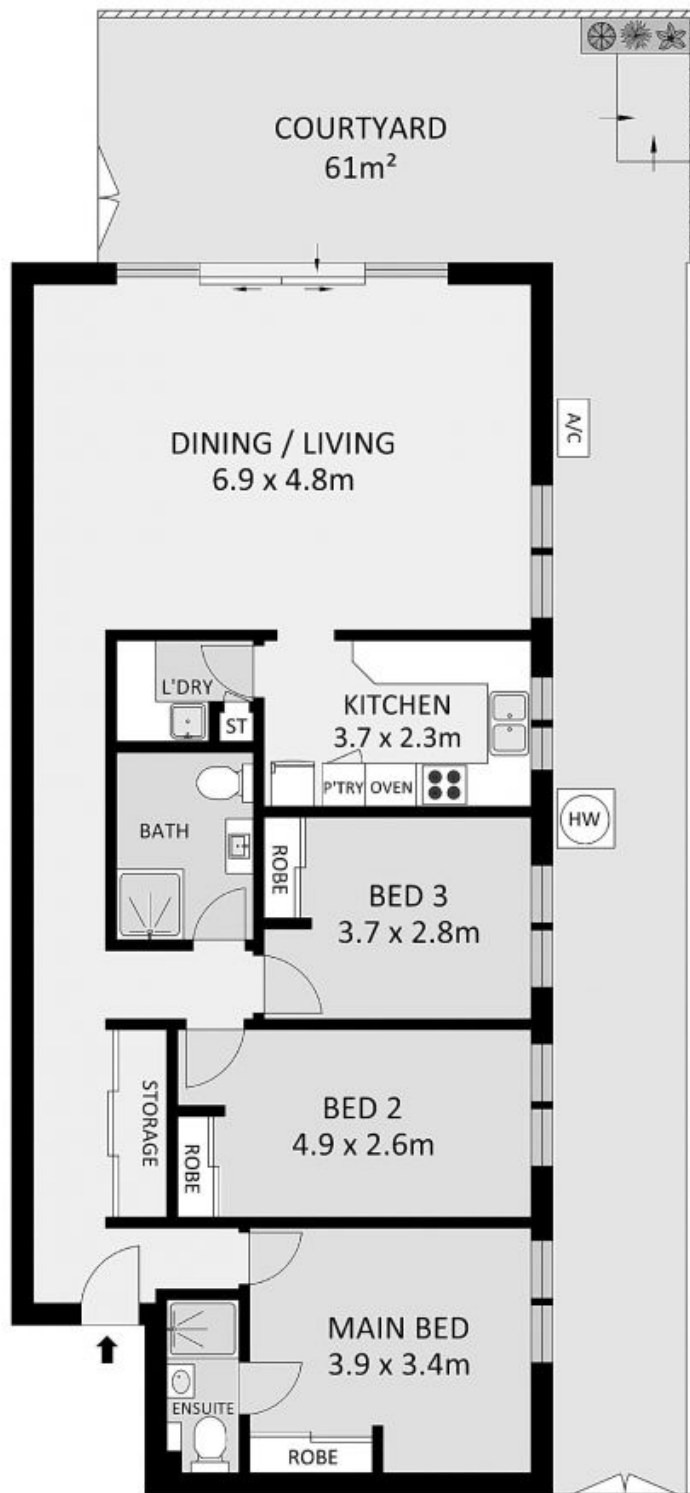
With the focus on generous entertaining spaces, this stunning ground floor apartment (with private gated side entrance) combines contemporary neutral tones with spacious rooms for easy living.

- Comprising combined living/dining areas opening to a wrap-around courtyard and landscaped gardens - perfect for outdoor entertaining
- Stylishly updated with beautiful oak floors
- Chef's Kitchen with stone benchtops and stainless steel appliances
- Two contemporary travertine bathrooms
- Three double bedrooms (master with ensuite)
- Internal laundry
- Lock up garage plus storage cage

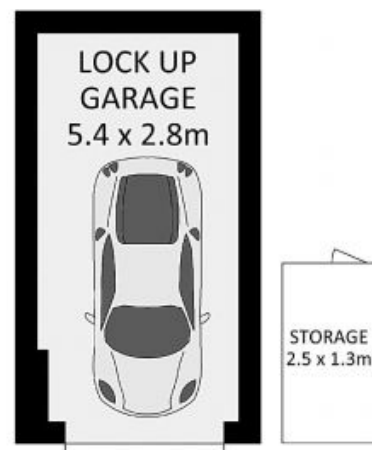


Mary Hill

+6141 165 3428



GROUND LEVEL



BASEMENT LEVEL



2/3-9 Lamont Street, Wollstonecraft



Disclaimer: Floor plans / site plans are intended as an approximate guide only. No representation is made or intended and any person or company using this information other than as a guide should always rely on their own enquiries.

2/3-9 Lamont Street, Wollstonecraft, NSW