

13 Weedon Road Artarmon, NSW



5



3



2

DEPOSIT RECEIVED

When only the best will do!

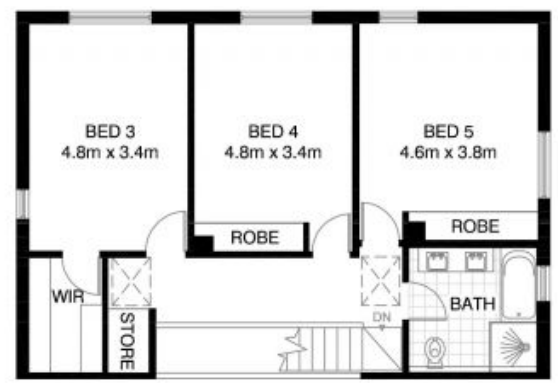
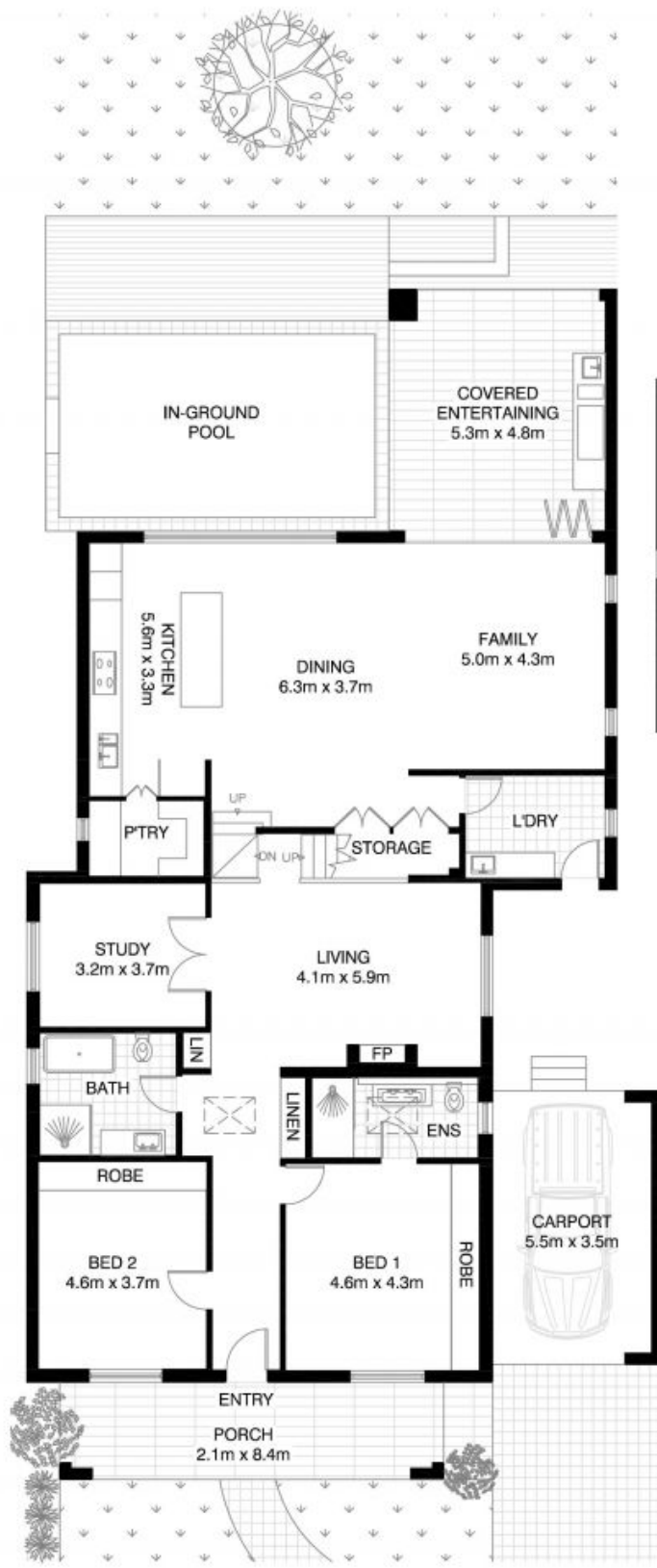
Position perfect, this exceptional near new two level family home, situated in tree lined street, has been constructed to the highest standard. Featuring space for the family, you will enjoy all this home has to offer.

- * Stunning entertainer's gourmet kitchen with spacious butler's pantry. Premium quality Miele appliances, Caesar Stone benchtops and breakfast bar.
- ? Light filled and spacious interiors offering open plan living and dining
- * Five double bedrooms all with built-ins (main with ensuite)
- ? Additional living room with gas fire
- * Spacious study
- ? Internal laundry



Mary Hill

+6141 165 3428



FIRST FLOOR

ARTARMON
13 WEEDON ROAD
 *INTERNAL FLOOR AREA APPROX 267m²



ALL DIMENSIONS UNLESS OTHERWISE SPECIFIED ARE APPROXIMATE